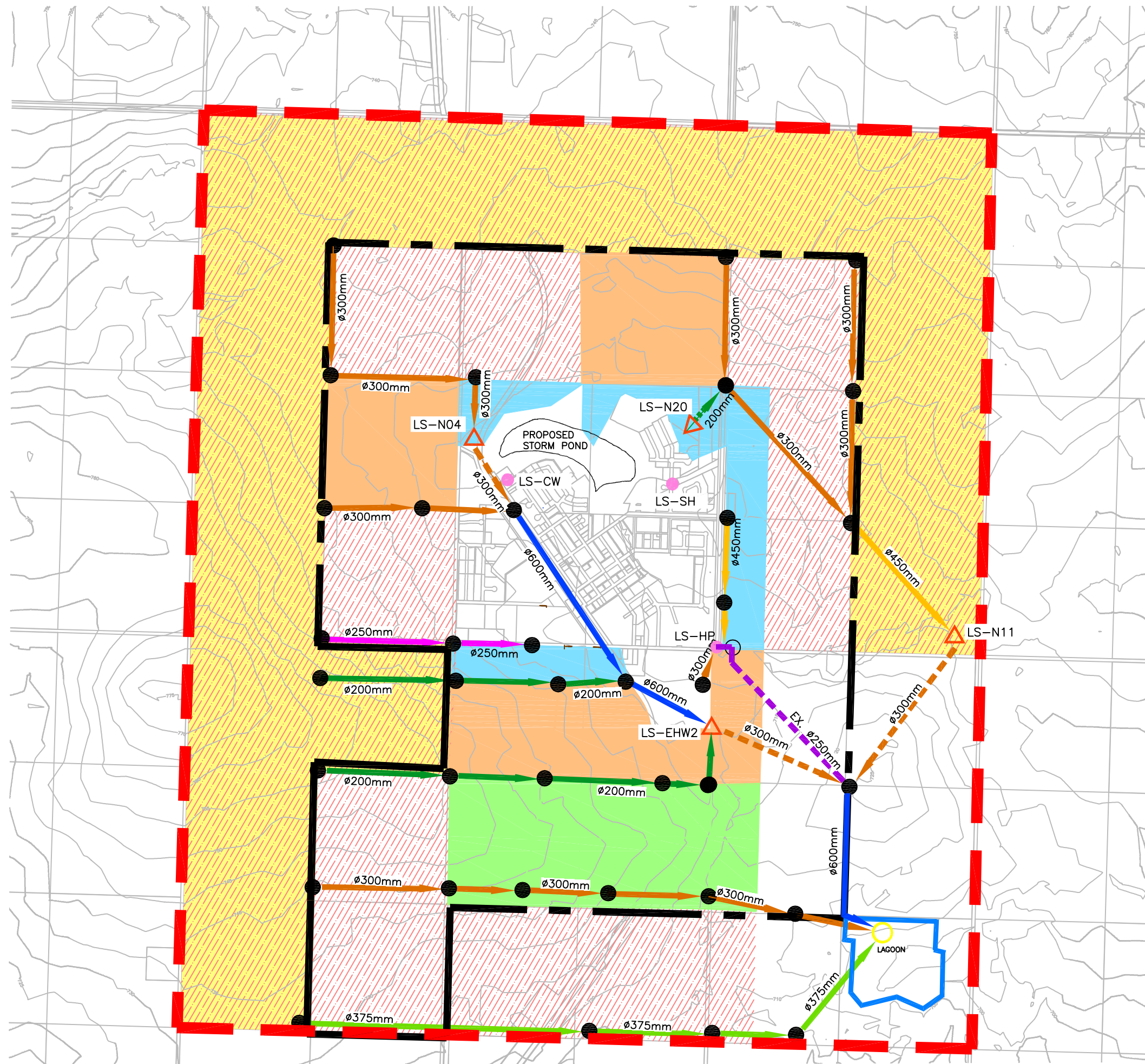



O:\proj\4074049\6-PreDesign\01-drawings\03-working dwgs\APRIL 2009\4094049-FIGURE 3.11.dwg - FIG 3.11 - smalaniuk - Apr 16, 2009 - 12:14pm



**LEGEND**

- EXISTING PUMPING STATION ●
- PROPOSED PUMP STATION △
- PROPOSED 200mm GRAVITY SEWER →
- PROPOSED 200mm PRESSURE SEWER - - - →
- EXISTING 250mm PRESSURE SEWER - - - →
- PROPOSED 250mm GRAVITY SEWER →
- PROPOSED 300mm PRESSURE SEWER - - - →
- PROPOSED 300mm GRAVITY SEWER →
- PROPOSED 375mm GRAVITY SEWER →
- PROPOSED 450mm GRAVITY SEWER →
- PROPOSED 600mm GRAVITY SEWER →
- 5 YR. CATCHMENT BOUNDARY ■
- 10 YR. CATCHMENT BOUNDARY ■
- 20 YR. CATCHMENT BOUNDARY ■
- ULTIMATE CATCHMENT BOUNDARY ■
- FRINGE AREA ■
- PROPOSED SEWER MANHOLE ●
- EXISTING SEWER MANHOLE ○
- TOWN BOUNDARY - - -
- STUDY BOUNDARY - - -

NOTE:  
INFILTRATION/INFLOW  
FROM FRINGE AREA EXCLUDED.

AQUATERA UTILITIES INC.	
2007 WATER AND WASTE WATER MASTER PLAN FOR THE TOWN OF SEXSMITH	
OPTION 2 WASTE WATER COLLECTION SYSTEM (ULTIMATE DEVELOPMENT PHASE)	
	APRIL 14/2009
FIGURE 3.11	